



L-806 Wind Cone

(Lighted & Unlighted, 8-Foot Wind Cone)

Document No. 96A0052

Issued: September 12, 1985

Rev. N: November 23, 2004

Manufactured to FAA Specification
AC 150/5345-27B



Siemens Airfield Solutions, Inc.

P.O. Box 30829
977 Gahanna Parkway
Columbus, OH 43230

Tel: (614) 861-1304
Fax: (614) 864-2069

Copyright © 2001 by Siemens Airfield Solutions, Incorporated. All rights reserved.

Siemens Airfield Solutions

*The innovative
approach*

Record of Changes

Page	Rev	Description	EC No.	Checked	Approved	Date
5-6, 5-7	F	Revised Figures 5 and 6.		EP	ED	
2-7, 4-3, 4-4, 5-2, 5-3, 5-9	G	Added metric units and Section 2.8. Revised Figures 2 and 8. Added CE mark to cover page.		EP	WT	
All	H	Reformatted manual.	00302	AR	ED	11/1/99
7-1	I	Added anchor bolt template	00396	JS	WT	2/7/00
2-3 thru 2-5, 3-16, 4-1, 5-1, 5-2, 5-6, 5-7	J	Added dimensions to Figure 2-2. Changed pole assembly description. Made lamp descriptions in Table 4-1 more specific. Updated Halibrite installation instructions for internally lighted wind cone. Qualified tether assembly as contractor-supplied. Updated illustration parts list instructions. Added note to internally lighted parts list. Changed description and part number of sock lamp from 100 W/120 Vac bi-pin (48A0365) to QHL 120 Vac/100 W (3400-0089).	00411	JS	WT	2/23/00
All	K	Changed to new title page. Changed ADB to Siemens Airfield Solutions.	00696	JS	WT	5/16/01
5-3, 5-7	L	Replaced parts 66A0026-29 (split washer), 65A0015-29 (hex nut), and 65A0015 (J-bolt) with 94A0152 (anchor bolt kit). Added part 75B0012 (bearing) to recommended spare parts list.	00720	AR	WT	7/23/01
3-15 thru 3-17	M	Added optional roof mounting procedure to the <i>Installation</i> section. Added a new Figure 3-6 and modified old Figure 3-6 (now Figure 3-7).	00800	JY	WT	12/10/01
3-5	N	Corrected typo on item 14 and 15 for Fig 3-3	01344	WT	WT	11/23/04

Table of Contents

Record of Changes.....	ii
Table of Contents.....	iii
Warranties.....	vi

Safety

1. Introduction.....	1-1
2. Safety Symbols.....	1-1
3. Qualified Personnel.....	1-2
4. Intended Use.....	1-2
5. Installation.....	1-3
6. Operation.....	1-3
7. Action in the Event of a System or Component Malfunction.....	1-4
8. Maintenance and Repair.....	1-4

Description

1. Introduction.....	2-1
2. Lighted Wind Cones.....	2-1
Externally Lighted Wind Cones.....	2-1
Internally Lighted Wind Cones.....	2-3
3. Unlighted Wind Cones.....	2-4
4. L-806 Wind Cone: Required Equipment.....	2-5
5. Specifications.....	2-5
Fabric Cone Size.....	2-5
Nylon Wind Sock Fabric Color.....	2-5
Pole Assembly.....	2-5
Temperature Range.....	2-6
Wind Velocities.....	2-6
Movement.....	2-6
Dimensions.....	2-6
Lamps.....	2-6

Installation

1. Introduction.....	3-1
2. Unpacking.....	3-1
3. Tools/Equipment/Supplies Needed.....	3-1
4. Mounting Foundation.....	3-1
5. Assembly Procedures.....	3-4
L-806 Wind Cone Assembly.....	3-4
Optional Sock Lighting Assembly.....	3-8
Optional Sock Lighting Assembly and Obstruction Light.....	3-11
Optional Obstruction Light Only.....	3-11
6. Power Adapter Connections.....	3-12
7. Internally Lighted Wind Cone Installation.....	3-12
8. Export Wind Cone Installation.....	3-15
9. Optional Roof Mounting.....	3-15

Maintenance

1. Introduction.....	4-1
2. Lighted Wind Cones	4-1
3. Lubrication.....	4-1
4. Structure.....	4-1
5. Wind Cone Sock and Cage	4-2
6. Wiring.....	4-2
7. Lowering Pole Assembly	4-2
8. Miscellaneous.....	4-2

Parts

1. Introduction.....	5-1
2. Using the Illustrated Parts List.....	5-1
3. L-806 Wind Cone Part Numbering System	5-1
Unlighted (Style II) L-806 Wind Cone Part Numbers	5-1
Externally Lighted (Style I) L-806 Wind Cone Part Numbers.....	5-2
Internally Lighted (Style I) L-806 Wind Cone Part Numbers.....	5-2
4. Internally Lighted Wind Cone Retrofit Kit Wind Cone Parts List.....	5-2
5. L-806 Wind Cone Parts List	5-3
Common Parts	5-3
Internally Lighted Wind Cone Socking Light Parts List.....	5-6
Externally Lighted Wind Cone Socking Light Parts List.....	5-6
L-810 Obstruction Light Parts List	5-6
Cage Assembly (8-ft {2.44-m}) Parts List.....	5-6
Wind Cone Sock (8-ft {2.44-m}) Parts List.....	5-7
Power Adapter Parts List.....	5-7
6. Recommended Spare Parts.....	5-7

Wiring Schematics

1. Introduction.....	6-1
2. Externally Lighted Wind Cone Wiring Connections	6-1
3. Internally Lighted Wind Cone Wiring Connections	6-2
4. Typical Wiring Diagram (Externally Lighted Wind Cone)	6-3

Anchor Bolt Template

Anchor Bolt Template.....	7-1
---------------------------	-----

List of Figures

Figure 2-1. Externally Lighted 8-Foot L-806 Wind Cone with Obstruction Light (Side View)	2-2
Figure 2-2. Internally Lighted L-806 Wind Cone (with Obstruction Light (Side View)).....	2-3
Figure 2-3. Unlighted L-806 Wind Cone (With/Without Obstruction Light) with Optional Tether	2-4
Figure 3-1. Locating Anchor Bolts	3-2
Figure 3-2. Installing Pole Support Base	3-3
Figure 3-3. Assembling Wind Cone.....	3-5
Figure 3-4. Optional Sock Lighting Assembly	3-9
Figure 3-5. Installing Internally Lighted Wind Cone.....	3-13
Figure 3-6. Wind Cone Roof Installation.....	3-15
Figure 3-7. Tether Installation.....	3-16
Figure 5-1. L-806 Wind Cone (With Internal Lighting Assembly)	5-4
Figure 5-2. L-806 Wind Cone (With External Lighting Assembly)	5-5
Figure 6-1. PA-4 Connections for Externally Lighted Wind Cone.....	6-1
Figure 6-2. PA-3 Connections for Internally Lighted Wind	6-2
Figure 6-3. Typical Wiring Diagram (Externally Lighted Wind Cone)....	6-3

List of Tables

Table 2-1. L-806 Wind Cone Styles and Options	2-1
Table 2-2. Required Equipment Supplied	2-5
Table 2-3. Required Equipment Not Supplied	2-5
Table 2-4. Fabric Cone Size	2-5
Table 2-5. Pole Height	2-5
Table 2-6. Metric Conversions.....	2-6
Table 2-7. L-806 Wind Cone Lamps	2-6
Table 3-1. Parts Required for Tether Installation.....	3-16
Table 4-1. Rated Lamp Life	4-1
Table 5-1. Unlighted Wind Cone Part Numbers	5-2
Table 5-2. Externally Lighted (Style I) Wind Cone Part Numbers.....	5-2
Table 5-3. Internally Lighted (Style I) Wind Cone Part Numbers.....	5-2

Warranties

Products of Siemens Airfield Solutions manufacture are guaranteed against mechanical, electrical, and physical defects (excluding lamps) for a period of one year from the date of installation or a maximum of two years from the date of shipment and are guaranteed to be merchantable and fit for the ordinary purposes for which such products are made.

Siemens Airfield Solutions will correct by repair or replacement, at its option, equipment or parts which fail because of mechanical, electrical or physical defects, provided that the goods have been properly handled and stored prior to installation, properly installed and properly operated after installation, and provided further that Buyer gives Siemens Airfield Solutions written notice of such defects after delivery of the goods to Buyer.

Siemens Airfield Solutions reserves the right to examine goods upon which a claim is made. Said goods must be presented in the same condition as when the defect therein was discovered. Siemens Airfield Solutions furthers reserves the right to require the return of such goods to establish any claim.

Siemens Airfield Solutions's obligation under this guarantee is limited to making repair or replacement within a reasonable time after receipt of such written notice and does not include any other costs such as the cost of removal of defective part, installation of repaired product, labor or consequential damages of any kind, the exclusive remedy being to require such new parts to be furnished.

Siemens Airfield Solutions's liability under no circumstances will exceed the contract price of goods claimed to be defective. Any returns under this guarantee are to be on a transportation charges prepaid basis. For products not manufactured by, but sold by Siemens Airfield Solutions, warranty is limited to that extended by the original manufacturer.

This is Siemens Airfield Solutions's sole guarantee and warranty with respect to the goods; there are no express warranties or warranties of fitness for any particular purpose or any implied warranties of fitness for any particular purpose or any implied warranties other than those made expressly herein. All such warranties being expressly disclaimed.

Disclaimers

This manual could contain technical inaccuracies or typographical errors. Siemens Airfield Solutions reserves the right to revise this manual from time to time in the contents thereof without obligation of Siemens Airfield Solutions to notify any person of such revision or change.

Details and values given in this manual are average values and have been compiled with care. They are not binding, however, and Siemens Airfield Solutions disclaims any liability for damages or detriments suffered as a result of reliance on the information given herein or the use of products, processes or equipment to which this manual refers. No warranty is made that the use of the information or of the products, processes or equipment to which this manual refers will not infringe any third party's patents or rights. The information given does not release the buyer from making their own experiments and tests.

Section 1

Safety

1. Introduction

This section contains general safety instructions for using your Siemens Airfield Solutions equipment. Some safety instructions may not apply to the equipment in this manual. Task- and equipment-specific warnings are included in other sections of this manual where appropriate. Note all warnings and follow all instructions carefully. Failure to do so may result in personal injury, death, or property damage.

To use this equipment safely,

- refer to the FAA Advisory Circular AC 150/5340-26, *Maintenance of Airport Visual Aids Facilities*, for instructions on safety precautions.
- observe all safety regulations. To avoid injuries, always remove power prior to making any wire connections and touching any parts. Refer to FAA Advisory Circular AC 150/5340-26.
- read and become familiar with the general safety instructions provided in this section of the manual before installing, operating, maintaining, or repairing this equipment.
- read and carefully follow the instructions given throughout this manual for performing specific tasks and working with specific equipment.
- store this manual within easy reach of personnel installing, operating, maintaining, or repairing this equipment.
- follow all applicable safety procedures required by your company, industry standards, and government or other regulatory agencies.
- obtain and read Material Safety Data Sheets (MSDS) for all materials used.

2. Safety Symbols

Become familiar with the safety symbols presented in this section. These symbols will alert you to safety hazards and conditions that may result in personal injury, death, or property and equipment damage.



WARNING: Failure to observe this warning may result in personal injury, death, or equipment damage.



WARNING: Risk of electrical shock. Failure to observe this warning may result in personal injury, death, or equipment damage.

2. Safety Symbols *(contd.)*



WARNING: Disconnect equipment from line voltage. Failure to observe this warning may result in personal injury, death, or equipment damage.



WARNING: Wear safety goggles. Failure to observe may result in serious injury.



CAUTION: Failure to observe may result in equipment damage.

3. Qualified Personnel

The term *qualified personnel* is defined here as individuals who thoroughly understand the equipment and its safe operation, maintenance, and repair. Qualified personnel are physically capable of performing the required tasks, familiar with all relevant safety rules and regulations and have been trained to safely install, operate, maintain, and repair the equipment. It is the responsibility of the company operating this equipment to see that its personnel meet these requirements.

4. Intended Use



WARNING: Use of this equipment in ways other than described in this manual may result in personal injury, death, or property and equipment damage. Use this equipment only as described in this manual.

Siemens Airfield Solutions cannot be responsible for injuries or damages resulting from nonstandard, unintended applications of its equipment. This equipment is designed and intended only for the purpose described in this manual. Uses not described in this manual are considered unintended uses and may result in serious personal injury, death, or property damage. Unintended uses may result from taking the following actions:

- making changes to equipment that have not been recommended or described in this manual or using parts that are not genuine Siemens Airfield Solutions replacement parts
- failing to make sure that auxiliary equipment complies with approval agency requirements, local codes, and all applicable safety standards
- using materials or auxiliary equipment that are inappropriate or incompatible with your Siemens Airfield Solutions equipment
- allowing unqualified personnel to perform any task

5. Installation

Read the installation section of all system component manuals before installing your equipment. A thorough understanding of system components and their requirements will help you install the system safely and efficiently.



WARNING: Failure to follow these safety procedures can result in personal injury or death.

- Allow only qualified personnel to install Siemens Airfield Solutions and auxiliary equipment. Use only approved equipment. Using unapproved equipment in an approved system may void agency approvals.
- Make sure all equipment is rated and approved for the environment in which you are using it.
- Follow all instructions for installing components and accessories.
- Install all electrical connections to local code.
- Use only electrical wire of sufficient gauge and insulation to handle the rated current demand. All wiring must meet local codes.
- Route electrical wiring along a protected path. Make sure they will not be damaged by moving equipment.
- Protect components from damage, wear, and harsh environment conditions.
- Allow ample room for maintenance, panel accessibility, and cover removal.
- Protect equipment with safety devices as specified by applicable safety regulations.
- If safety devices must be removed for installation, install them immediately after the work is completed and check them for proper functioning.

6. Operation

Only qualified personnel, physically capable of operating the equipment and with no impairments in their judgment or reaction times, should operate this equipment.

Read all system component manuals before operating this equipment. A thorough understanding of system components and their operation will help you operate the system safely and efficiently.

6. Operation *(contd.)*

- Before starting this equipment, check all safety interlocks, fire-detection systems, and protective devices such as panels and covers. Make sure all devices are fully functional. Do not operate the system if these devices are not working properly. Do not deactivate or bypass automatic safety interlocks or locked-out electrical disconnects or pneumatic valves.
- Never operate equipment with a known malfunction.
- Do not attempt to operate or service electrical equipment if standing water is present.
- Use this equipment only in the environments for which it is rated. Do not operate this equipment in humid, flammable, or explosive environments unless it has been rated for safe operation in these environments.
- Never touch exposed electrical connections on equipment while the power is ON.

7. Action in the Event of a System or Component Malfunction

Do not operate a system that contains malfunctioning components. If a component malfunctions, turn the system OFF immediately.

- Disconnect and lock out electrical power.
- Allow only qualified personnel to make repairs. Repair or replace the malfunctioning component according to instructions provided in its manual.

8. Maintenance and Repair

Allow only qualified personnel to perform maintenance, troubleshooting, and repair tasks. Only persons who are properly trained and familiar with Siemens Airfield Solutions equipment are permitted to service this equipment.

- Always use safety devices when working on this equipment.
- Follow the recommended maintenance procedures in your equipment manuals.
- Do not service or adjust any equipment unless another person trained in first aid and CPR is present.
- Connect all disconnected equipment ground cables and wires after servicing equipment. Ground all conductive equipment.
- Use only approved Siemens Airfield Solutions replacement parts. Using unapproved parts or making unapproved modifications to equipment may void agency approvals and create safety hazards.

8. Maintenance and Repair*(contd.)*

- Check interlock systems periodically to ensure their effectiveness.
- Do not attempt to service electrical equipment if standing water is present. Use caution when servicing electrical equipment in a high-humidity environment.
- Use tools with insulated handles when working with electrical equipment.

Section 2

Description

1. Introduction

This section describes the Siemens Airfield Solutions L-806 wind cone assembly. Wind cones are used at airports and heliports to provide visual surface wind direction and to give an indication of velocity to flight personnel in flight or on the ground.

Refer to Table 2-1. The L-806 wind cone comes in two styles. Style I is lighted, and Style II is unlighted. Refer to the *Parts* section for part numbers.

Table 2-1. L-806 Wind Cone Styles and Options

Style	Type	Options
Style I	Externally lighted	With L-810 obstruction light
	Internally lighted	With L-810 obstruction light
Style II	Unlighted	With L-810 obstruction light
		Without L-810 obstruction light

2. Lighted Wind Cones

The lighted (Style I) wind cones may be either externally lighted or internally lighted. The internally and externally lighted wind cones are not ETL certified.

Externally Lighted Wind Cones

See Figure 2-1. The externally lighted assembly consists of a cluster of four 120-watt/120 Vac floodlights and lamp holders. The lamp holders are mounted on a junction box with 90-degree spacing.

**Externally Lighted Wind
Cones (contd.)**

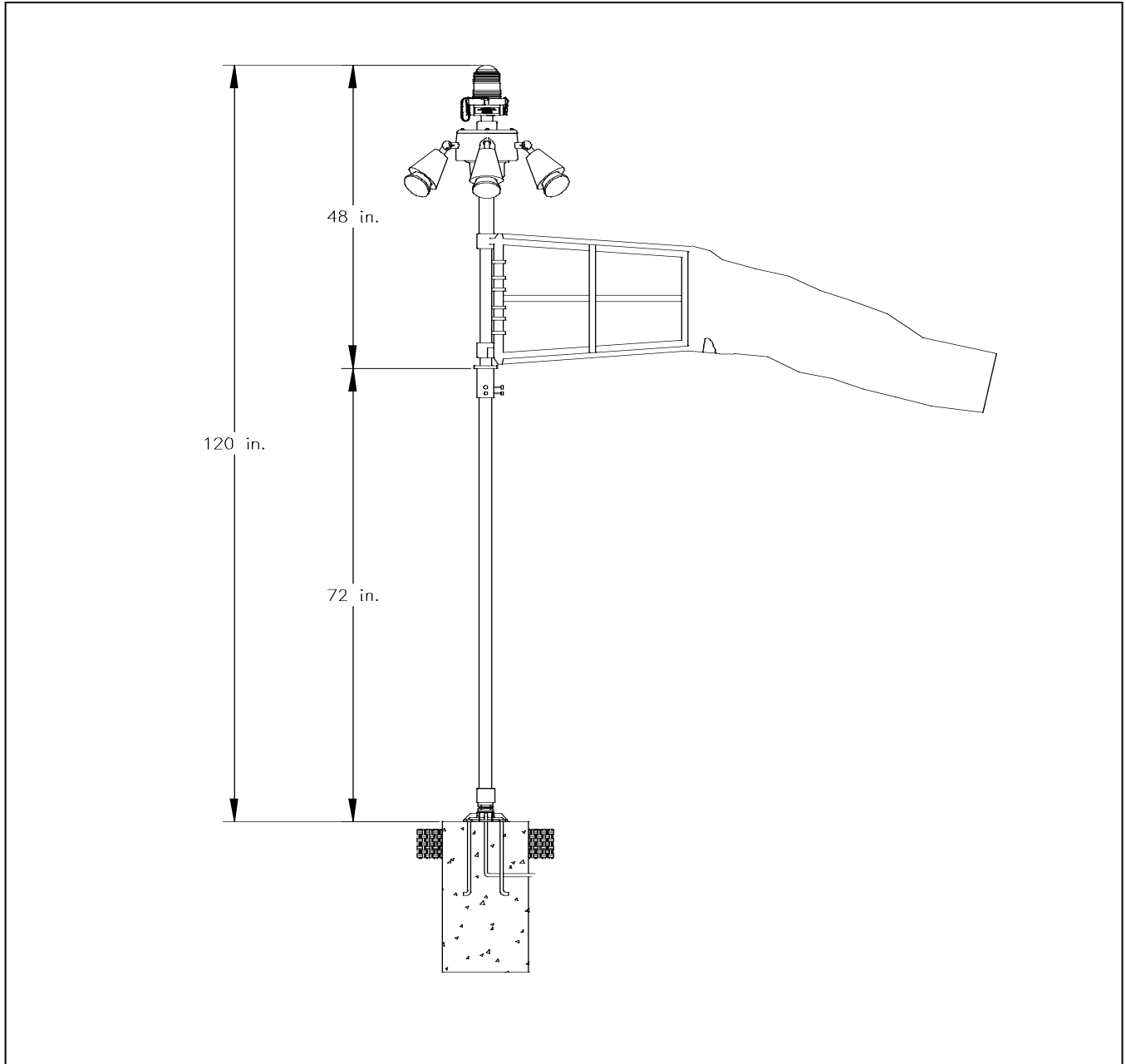


Figure 2-1. Externally Lighted L-806 Wind Cone with Obstruction Light (Side View)

Internally Lighted Wind Cone

See Figure 2-2. The internally lighted wind cone assembly consists of a cluster of two 100 W/120 Vac bi-pin lampholders with reflector. The lamp holders are mounted on a bar that is installed on the outer ring of the wind cone's cage assembly and are aimed toward the tail end of the sock.

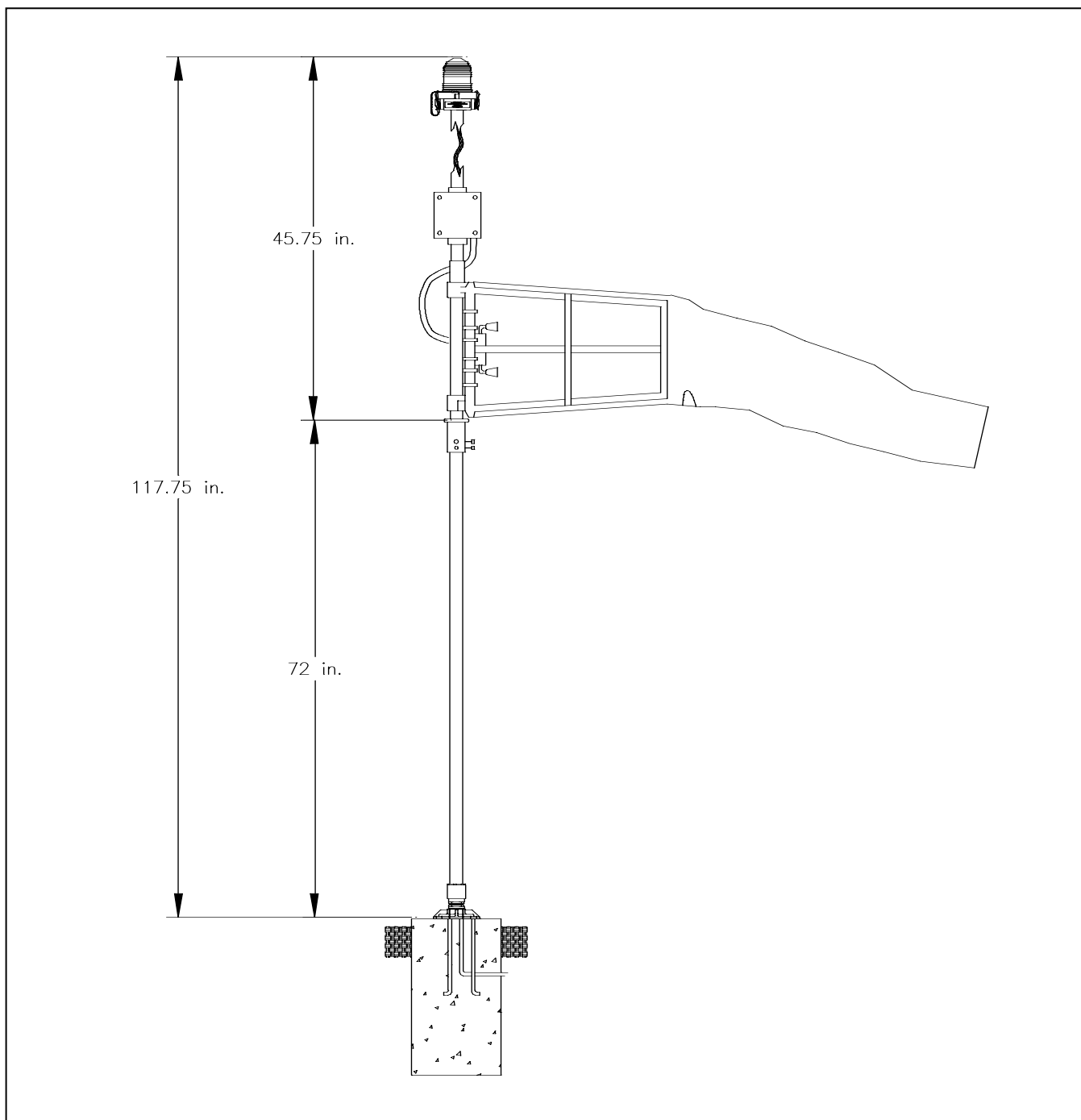


Figure 2-2. Internally Lighted L-806 Wind Cone with Obstruction Light (Side View)

3. Unlighted Wind Cones

See Figure 2-3. The unlighted L-806 wind cones may include the L-810 obstruction light as an option. A cap is provided for unlighted wind cone assemblies without the L-810 option to cover the top opening on the bearing and cage shafts.

NOTE: In Figure 2-3, the optional tether assembly is contractor-supplied.

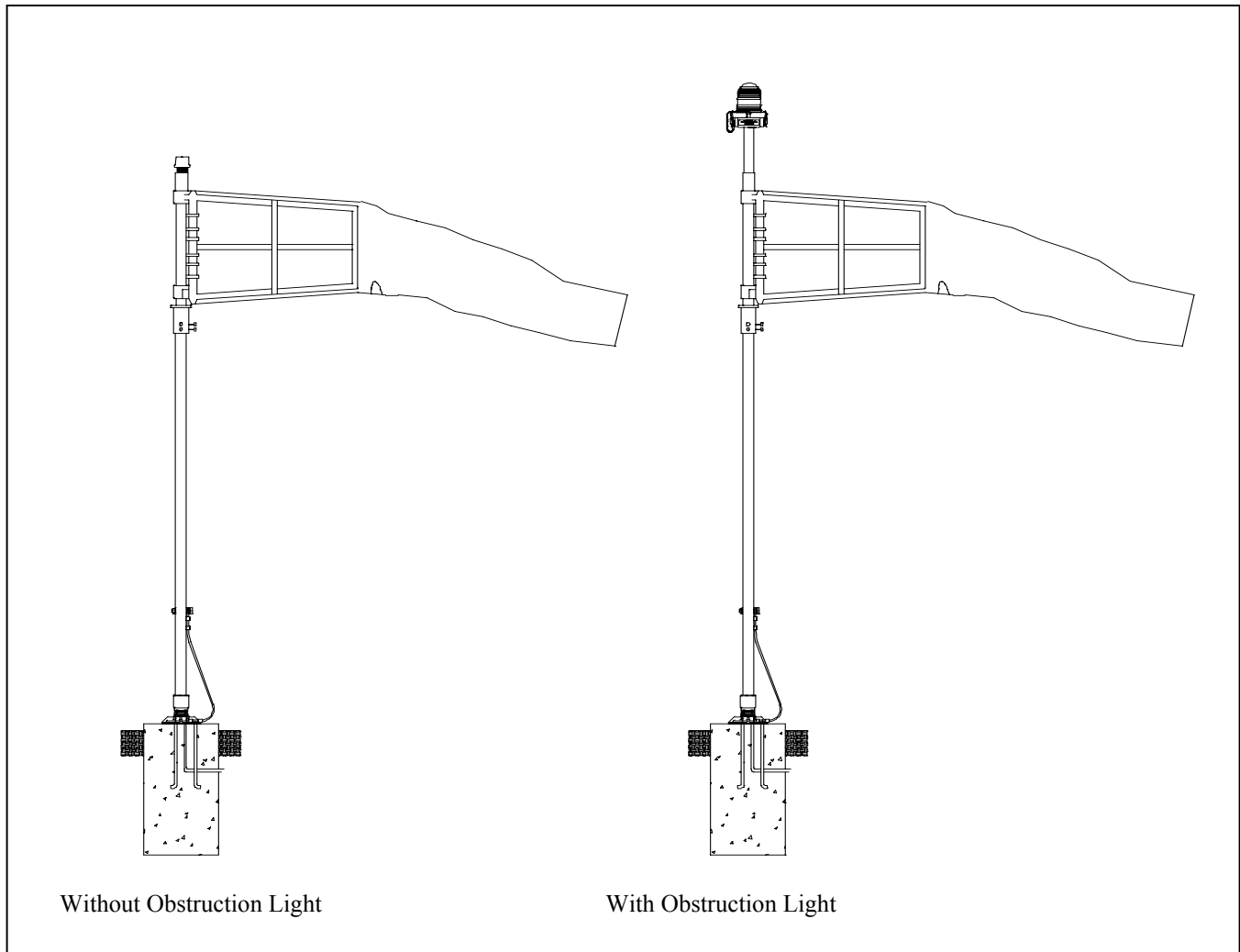


Figure 2-3. Unlighted L-806 Wind Cone (With/Without Obstruction Light) with Optional Tether

4. L-806 Wind Cone: Required Equipment

Refer to Table 2-2 for required equipment that is supplied. Refer to Table 2-3 for required equipment that is not supplied. Refer to the *Parts* section for ordering information.

Table 2-2. Required Equipment Supplied

Description	Quantity
L-806 wind cone assembly	1
Instruction manual	1 per order

Table 2-3. Required Equipment Not Supplied

Description	Quantity
Wrenches for 3/8 inch, 1/2 inch, and 5/8 inch hex screws and nuts	3
Allen hex keys for 5/64 inch, 3/16 inch and 1/4 inch	3
Medium size blade screwdriver	1
Cloth for cleaning lamps	As required
Grease gun	1

5. Specifications

This subsection describes the specifications for the L-806 wind cones.

Fabric Cone Size

Refer to Table 2-4 for fabric cone size.

Table 2-4. Fabric Cone Size

Cone Size	Sock Length	Thread Diameter
Size 1	8 ft (2.44 m)	18 in. (457 mm)

Nylon Wind Sock Fabric Color

The standard nylon wind sock fabric color standards include

- international orange color

NOTE: Other colors are available as a special order. Socks having highly visible contrasting colors may be desirable for installations having unique seasonal or local terrain condition.

- meets or exceeds colorfastness as determined by Method 5671 of Federal Standard 191

Pole Assembly

The pole is made of two-inch (50.80 mm) round aluminum alloy tubing. Refer to Table 2-5 for pole height.

Table 2-5. Pole Height

Sock Models	Pole Height
8 ft (2.44 m)	6 ft (1.829 m)

Temperature Range

-55 to +55 °C (-67 to +131 °F)

Wind Velocities

The wind cone gives true wind direction in wind velocities as low as 3 knots. The wind cone sock fully extends in wind velocities of 15 knots.

Movement

Free movement occurs throughout a full 360 degree rotation.

Dimensions

See Figure 2-1 for wind cone dimensions. Refer to Table 2-6 for metric conversions.

Table 2-6. Metric Conversions

Inches	Millimeters
48	1219.2
120	3048
72	1828.8
45.75	1162.05
117.75	2990.85

NOTE: Figure 2-1 shows the dimensions for an externally lighted wind cone. These dimensions also apply to the internally lighted and unlighted wind cones.

Lamps

Refer to Table 2-7.

Table 2-7. L-806 Wind Cone Lamps

Type	Number of Lamps	Lamp Wattage
Externally lighted	Four	120 W
Internally lighted	Two	100 W

Section 3

Installation



WARNING: Allow only qualified personnel to perform the following tasks. Observe and follow the safety instructions in this document and all other related documentation.

1. Introduction

This section describes instructions for installing the L-806 wind cone.

2. Unpacking

The equipment is shipped ready for installation. Handle equipment very carefully to prevent component damage. Unpack the carton upon receipt and check the contents and their condition. Note any exterior damage to the carton that might lead to detection of equipment damage.

If you note any damage to any equipment, file a claim with the carrier immediately. The carrier may need to inspect the equipment.

3. Tools/Equipment/Supplies Needed

The following are the tools, equipment, and supplies needed to install the L-806 wind cone:

- wrenches for 3/8 in., 1/2 in., and 5/8 in. hex screws and nuts
- allen hex keys for 5/64 in., 3/16 in. and 1/4 in.
- medium size blade screwdriver
- cloth for cleaning lamps
- grease gun
- sawhorse

4. Mounting Foundation

When installed on a structure or building, the wind cone must be tethered. Refer to *Optional Tether Installation* in this section.

Refer to the guidelines below when mounting the wind cone on the base.

- See Figure 3-1. Put the L-806 wind cone on a concrete base (4).

NOTE: The concrete base is 6 BAG entrained with $\frac{3}{4}$ aggregates producing 3000 psi (20, 684.28 KN/m²) after 20 days.

- Slope the top of the concrete base (4) downward from the 8-in.- (2032-mm-) diameter bolt circle for drainage.
- Place the 5/8-inch- (158.75-cm-) diameter electrical conduit (2) in the hole (2) in the center of the wind cone base. (See also Figure 3-2, Items 2 and 3).
- Use the four equally spaced 1-in.- (254-mm-) diameter anchor bolt holes (1) in the bolt circle as centers for locating the four 5/8-in. (15.875-mm) x 27-in.- (685.8-mm-) long anchor bolts (6). (See also Figure 3-2, Item 2.)

4. Mounting Foundation
(contd.)

NOTE: The wind cone foundation in Figure 3-1 is given as only a general guide. The contractor has the responsibility to determine the dimensions and type of foundation demanded by the soil conditions at the installation site.

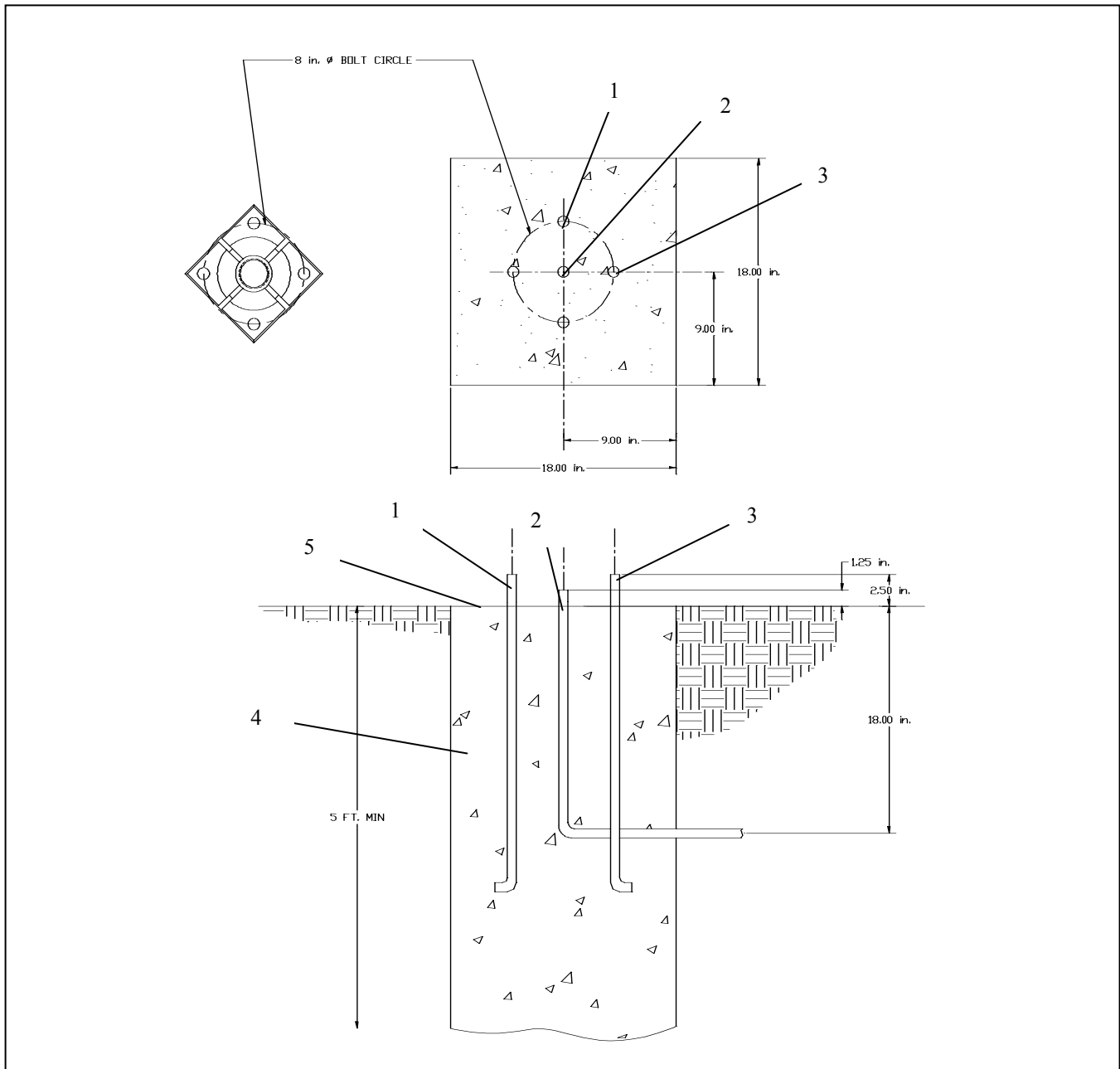


Figure 3-1. Locating Anchor Bolts

- | | |
|--|-------------------------|
| 1. 5/8-Inch-Diameter Anchor Bolt | 4. Concrete Base |
| 2. 1-Inch Electrical Conduit (Contractor-Supplied) | 5. Top of Concrete Base |
| 3. Mounting Hole for Prevailing Wind | |

4. Mounting Foundation

(contd.)

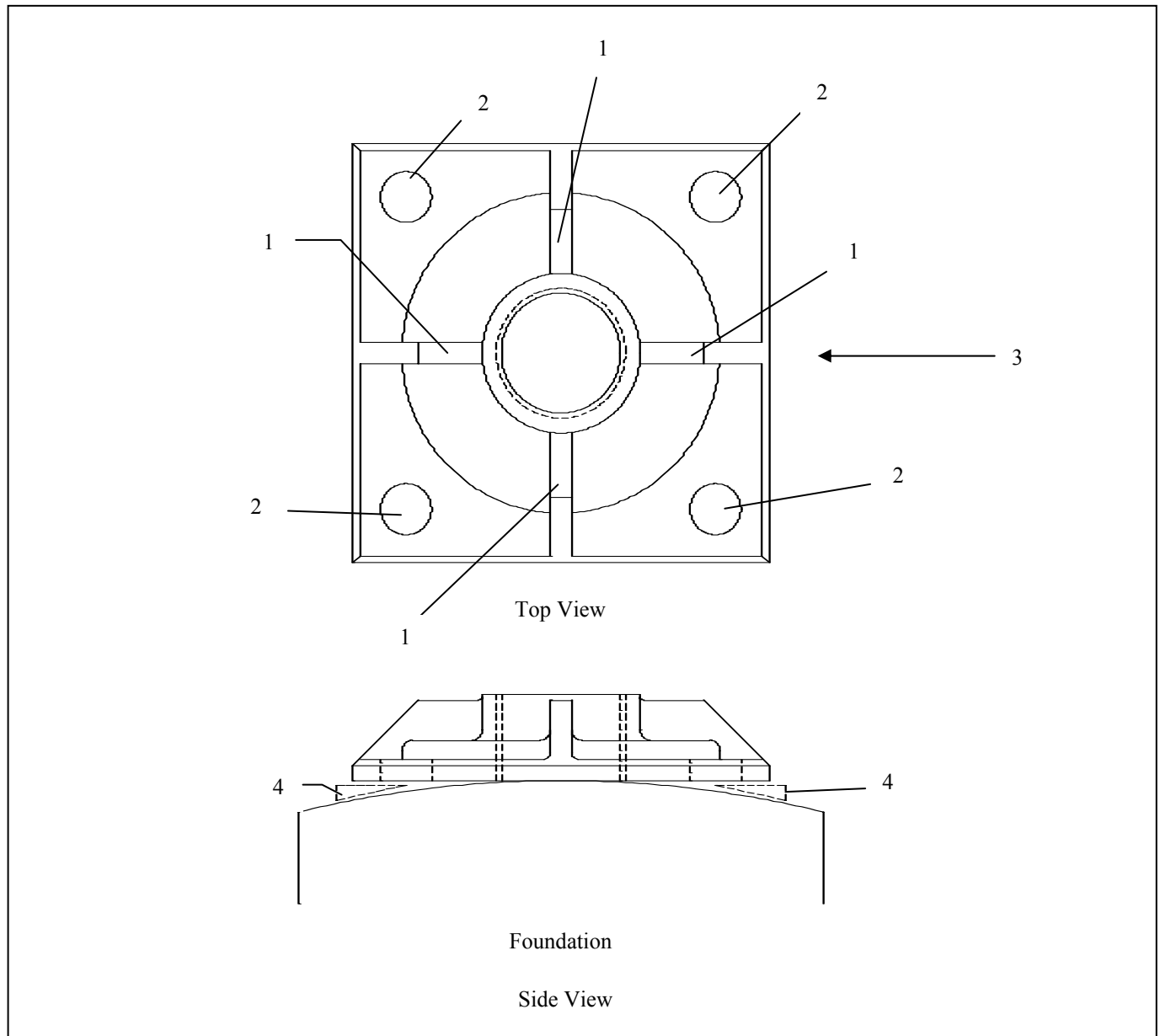


Figure 3-2. Installing Pole Support Base

- | | |
|---|------------------------------|
| 1. Gusset Opposite Prevailing Winds | 3. Prevailing Winds |
| 2. Four Equally Spaced Mounting Holes on 8-Inch Bolt Circle | 4. Contractor-Supplied Shims |

5. Assembly Procedures

This subsection describes procedures for installing the assemblies listed below.

- L-806 wind cone
- sock lighting assembly
- optional sock lighting assembly and obstruction light
- optional obstruction light only

L-806 Wind Cone Assembly

NOTE: Check the packing list with the parts list to verify that all parts are present before proceeding. Refer to the *Parts* section for part numbers.

To assemble the L-806 wind cone, perform the following procedure:

1. Install the pole assembly by performing the following procedure:
 - a. See Figure 3-3. Screw the frangible coupling (12) into the L-806 support base (13) and screw one locknut (11) onto the frangible coupling to the end of the thread.

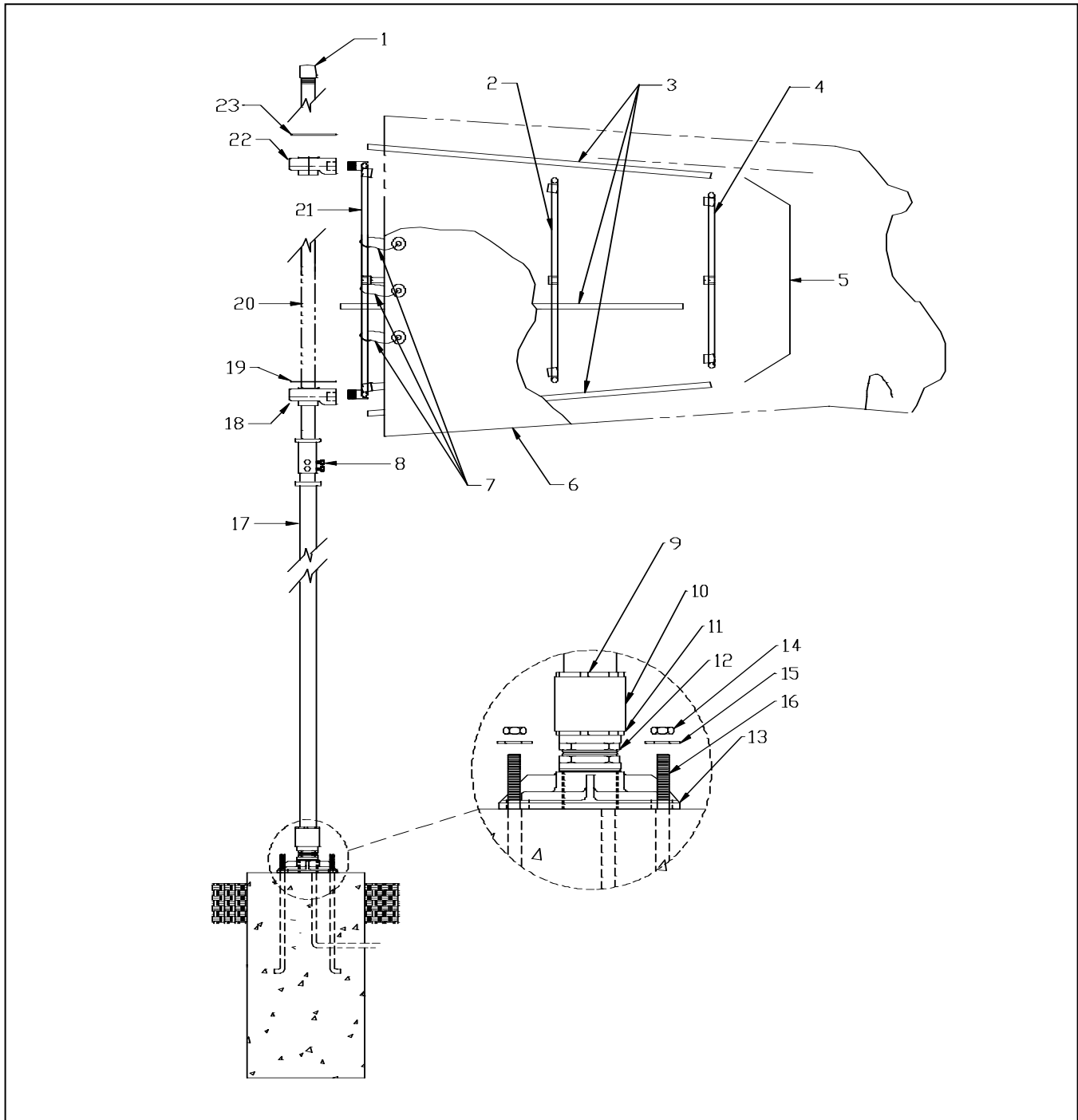


Figure 3-3. Assembling Wind Cone

- | | | | |
|------------------|------------------------|-------------------------------|--------------------------|
| 1. Pipe Cap | 7. Sock Ties | 13. L-806 Base | 19. Lower Bearing Shield |
| 2. Mid Ring | 8. Hex Screws | 14. 5/8-11 Hex Nut | 20. Shaft Assembly |
| 3. Support Rod | 9. Locknut | 15. 5/8 Split Washer | 21. Cage Throat Ring |
| 4. Trail Ring | 10. Aluminum Coupling | 16. Anchor Bolt w/ 5/8-11 thd | 22. Upper Bearing |
| 5. Cage Assembly | 11. Locknut | 17. Pole Assembly | 23. Upper Bearing Shield |
| 6. Wind Sock | 12. Frangible Coupling | 18. Lower Bearing | |

L-806 Wind Cone Assembly (contd.)

- b. Screw one locknut (9) onto the end of the pole assembly (17). Then Screw the 2-in. (50.8 mm) aluminum coupling (10) onto the end of the pole assembly and tighten.
- c. Screw the support base with the frangible coupling onto the aluminum coupling attached to the mast. Tighten the locknut (11) on the frangible coupling against the aluminum coupling.



CAUTION: See Figure 3-2. Before fastening the base plate to the concrete pad, check to make sure that the pad has not been sloped or tapered under the plate. If the concrete pad is sloped, for example, to drain water away from the anchor bolts, place contractor-supplied shims (3) under the plate to prevent the plate from being stressed during installation on the pad. Failure to use shims, if the pad is sloped or tapered, could cause the base plate to crack immediately or in the future after tightening the four mounting hex nuts on the anchor bolts.

NOTE: When installing the pole support base on a concrete pad, make sure that the base is level before tightening the anchor bolts.

2. See Figure 3-3. Lay cage throat ring (20) on a flat surface with threaded connectors welded on the inner diameter of the ring pointing up and toward the center of the ring.
3. Thread four support rods (3) into the throat ring connectors. Thread finger tight.
4. Slide the mid ring (2) over the four support rods. Sleeves should point toward the throat ring and away from the center of the ring. Locate mid ring from the throat ring at a distance of 18 in. \pm 1/4 in. (457 mm \pm 6 mm).

NOTE: The location of the mid ring is measured from the far side of the throat ring to the near side of the mid ring. In addition, sleeves on the mid ring are not threaded but provide a slip fit.

5. Tighten two hex-socket set screws in each mid ring sleeve at four places to secure the mid ring to support rods.

L-806 Wind Cone Assembly
(*contd.*)

6. Slide the trail ring (4) on the ends of the four support rods.

NOTE: Sleeves on the inside of the ring should point inward and toward the center of the ring.

7. Tighten the two hex-socket set screws in each trail ring sleeve at four places to secure the trail ring to the support rods.
8. Thread the upper bearing (21) and lower bearing (18) on two thread adapters at 180 degree positions on the throat ring.

NOTE: Bearing hubs should point to the ground.

9. Tighten bearings onto adapter and align bearing holes vertically with each other by eye.
10. Insert the lower bearing cage shield (19) onto the shaft (20) and slide the shaft through the lower bearing approximately 2–3 inches (51–76 mm). Then slide the upper bearing shield (23) over the shaft and position against the upper bearing (22).
11. Check alignment of the lower bearing with the shaft and continue to slide the shaft through the bearing approximately 2–3 inches (51–76 mm) and then slide the upper bearing shield (23) over the shaft. Continue to push the bearing cage shaft assembly through both bearings until the lower bearing (18) is against the shaft collar flange.
12. Recheck alignment of the shaft and bearings to ensure that the cage assembly will not bind as the cone rotates with the wind.
13. After you check alignment to make sure that the lower bearing is against the shaft collar flange, tighten two set screws in each bearing to secure the cage assembly to the shaft. Then make sure that both bearing shields are pushed down against the bearings.
14. Place the cage shaft assembly onto the end of the pole assembly and secure by tightening four hex-head screws. Grease both bearings.

NOTE: Grease both bearings on the cage assembly through grease fittings on the bearings. A rust-inhibited, water-resistant, lithium-based grease is recommended. In extremely cold climates, wind cone movement may become sluggish. Replace grease with low temperature lubricant.

L-806 Wind Cone Assembly

(contd.)

15. Consider the conditions given in the table below and then proceed to the next step.

If the following condition exists...	Proceed to...
Wind cone is unlighted and/or does not include L-810 obstruction light.	Step 16 in <i>L-806 Wind Cone Assembly</i> in <i>Assembly Procedures</i> in this section
Optional sock lighting assembly is included.	<i>Optional Sock Lighting Assembly</i> in this section
Optional sock lighting assembly and obstruction light are included.	<i>Optional Sock Lighting Assembly</i> and <i>Obstruction Light</i> in this section
Optional obstruction light only is included.	<i>Optional Obstruction Light Only</i> in this section

16. Slip the wind sock (6) over the cage assembly (5) and align the drain grommets in the wind sock to face down when the wind cone assembly is raised to the vertical position. Attach the sock to the throat ring by inserting plastic tie-wraps through the grommets in the sock throat and then around the cage throat ring. Pull the tie-wraps tight and trim off excess tie-wrap.
17. Bolt the base to the anchor bolts (16).
18. Then screw the frangible coupling into the base. Screw the pipe coupling and locknut onto the frangible coupling.
19. Screw the pole assembly and locknut into the pipe coupling.

Optional Sock Lighting Assembly

To assemble the optional sock lighting assembly, perform the following procedure:

1. See Figure 3-4. Screw the light assembly junction box (5) onto the end of the bearing cage shaft assembly and tighten. Then remove four junction box lid screws (2) and remove junction box lid (9) and gasket (8).

Optional Sock Lighting Assembly (contd.)

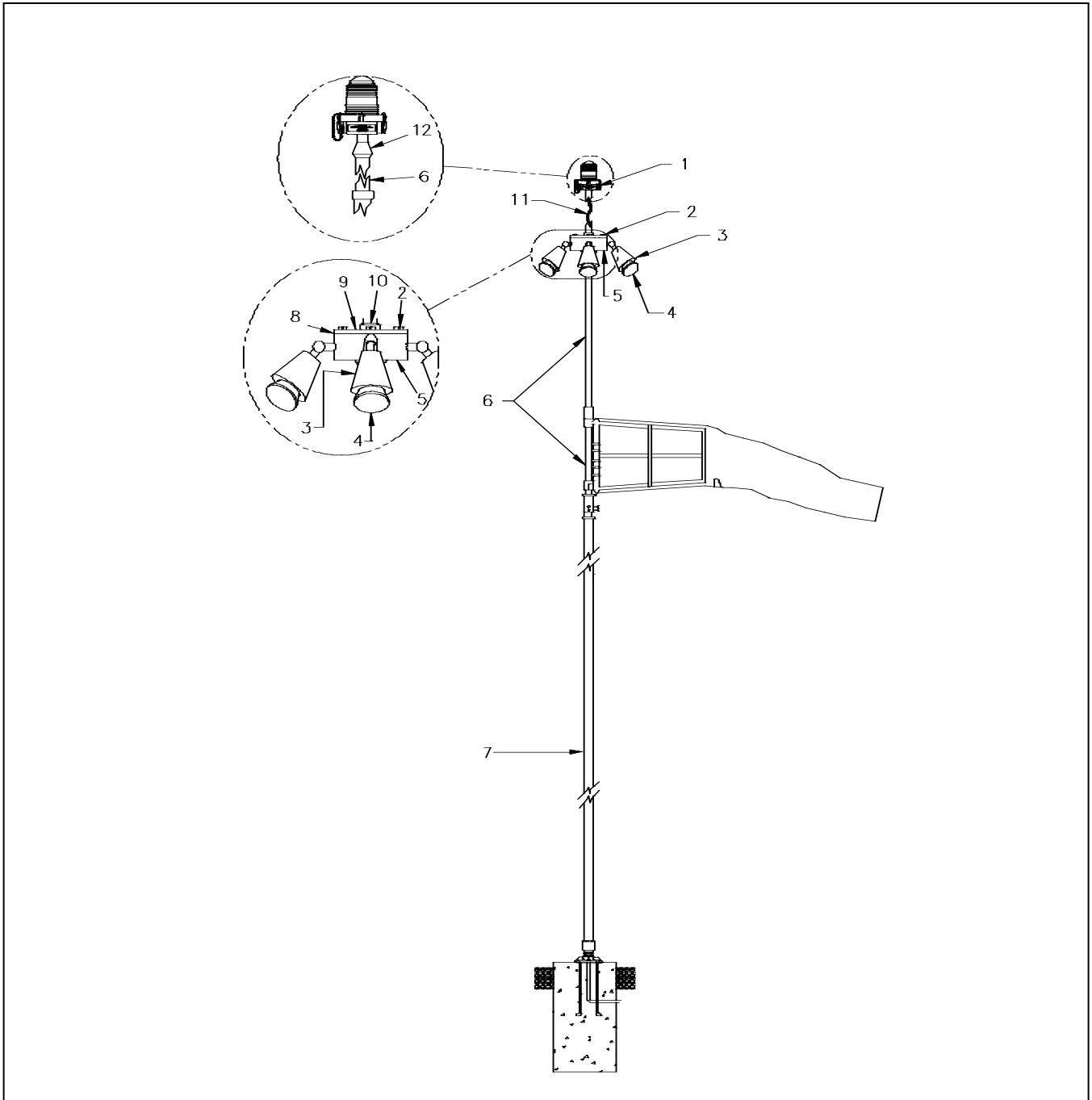


Figure 3-4. Optional Sock Lighting Assembly

- | | | |
|---------------------------------|-------------------|--------------------------------------|
| 1. Obstruction Light Assembly | 5. Junction Box | 9. Junction Box Lid |
| 2. 10-32 x 3/4 Round Head Screw | 6. Shaft Assembly | 10. Pipe Plug |
| 3. Lamp Holder | 7. Pole Assembly | 11. Customer-Supplied Wiring, AWG 14 |
| 4. Lamp | 8. Gasket | 12. Reducer Pipe Nipple |

Optional Sock Lighting Assembly *(contd.)*

2. Feed fish tape through the junction box and out through the bottom of the pole assembly base and pull through two 19-foot- (5.8-m-) long AWG 14 wires (11). Allow the two wires to extend one foot (305 mm) beyond the junction box.

NOTE: One AWG 14 wire is black, and the other wire is white. These wires should be rated at 300 Vac.

3. Connect the wires of the four lamp sockets and power leads in parallel. Use customer-supplied wire nuts on all connections or other hardware as required by local regulations.
4. If an adjustment is required to align the lamp holders (3) in a vertical plane, loosen the locknut (9) inside the junction box and align lampholder as required.

NOTE: The lamp holder is pre-assembled and includes electrical leads.

NOTE: Vertical angle of lamp holders has been factory preset at 15 degrees. Do not change this angle. Readjustment will prevent the wind sock from being properly illuminated.

5. After you have checked the alignment of the lamp holders, screw the four 120 watt flood lamps (4) into the sockets. Secure the junction box with a gasket (8) and four junction box lid screws (2). Tighten screws.

NOTE: Refer to the *Parts* section for lamp specifications.

6. Take up the wire slack as needed, but do not put tension on the wires.
7. Consider the conditions in the table below and then proceed to the next step.

If the following condition exists...	Proceed to...
Optional sock lighting assembly is included.	Step 16 of <i>Assembly Procedures</i> in this section
Optional sock lighting assembly and obstruction light are included.	<i>Optional Sock Lighting Assembly</i> and <i>Obstruction Light</i> in this section

Optional Sock Lighting Assembly and Obstruction Light

To assemble the optional sock lighting assembly and the obstruction light, perform the following procedure:

1. See Figure 3-4. Remove the pipe plug (10) from the junction box (5) and discard. Assemble and install the sock lighting option. Refer to *Optional Sock Lighting Assembly* in this section.
2. Disassemble the L-810 obstruction light (1) by removing lens clamps, lens, lamp, and lamp socket. Feed two 18-inch- (457-mm-) long AWG 14 wires (11) into the obstruction light base and connect wires to the lamp socket terminals. Reinstall the lamp socket to the lamp base.

NOTE: One AWG 14 wire is black, and the other wire is white. These wires should be rated at 300 Vac.

3. Screw the obstruction light supplied with the reducer pipe nipple (12) into the junction box lid (9). Connect wires in parallel with flood lamp wires in the junction box. Secure the junction box lid, with the obstruction light base installed to the junction box with gasket (8) and four junction box lid screws (2). Tighten the screws and reassemble the L-810 obstruction light.
4. Proceed to Step 15 of *L-806 Wind Cone* in *Assembly Procedures* in this section.

Optional Obstruction Light Only

To assemble the optional obstruction light, perform the following procedure:

1. See Figure 3-4. Screw 1-1/4 x 1-inch (31.75 x 25.4-mm) reducer pipe nipple (12) onto the end of the cage shaft assembly.
2. Feed fish tape through the coupling and out through the bottom of the pole assembly base and pull through two 19-foot- (5.8-m-) long AWG 14 wires (11). Allow wires to extend one foot (305 mm) beyond the coupling.

NOTE: One AWG 14 wire is black, and the other wire is white. These wires should be rated at 300 Vac.

3. Disassemble the L-810 obstruction light (1) by removing lens clamps, lens, lamp, and lamp socket. Feed two 18-inch- (457-mm-) long AWG 14 wires (11) through the light base and connect wires to the lamp socket terminals.

NOTE: One AWG 14 wire is black, and the other wire is white. These wires should be rated at 300 Vac.

Optional Obstruction Light Only *(contd.)*

4. Connect two power leads to two obstruction light leads with customer-supplied wire nuts.
5. Screw the L-810 obstruction light assembly onto the reducer pipe nipple.
6. Reassemble the obstruction light assembly with lamp and lens.
7. Take up wire slack as needed, but do not put tension on wires.
8. Proceed to Step 16 of *L-806 Wind Cone* in *Assembly Procedures* in this section.

6. Power Adapter Connections

If a 6.6 ampere series circuit is to power the lighted wind cone, use a Siemens Airfield Solutions PA-4 adapter. Refer to the *Wiring Schematics* section for the wind cone wiring connections.

7. Internally Lighted Wind Cone Installation

This subsection describes installation procedures for the internally lighted wind cone.

To install the internally lighted wind cone, perform the following:

1. Assemble the wind cone by completing steps 1 through 14 in *L-806 Wind Cone Assembly* in this section.

NOTE: See Figure 3-5. Do not install 1-1/4 x 1-inch (31.75 x 25.4 mm) reducer bushing (6) until you install the wind cone cage (7) on the shaft.

7. Internally Lighted Wind Cone Installation (contd.)

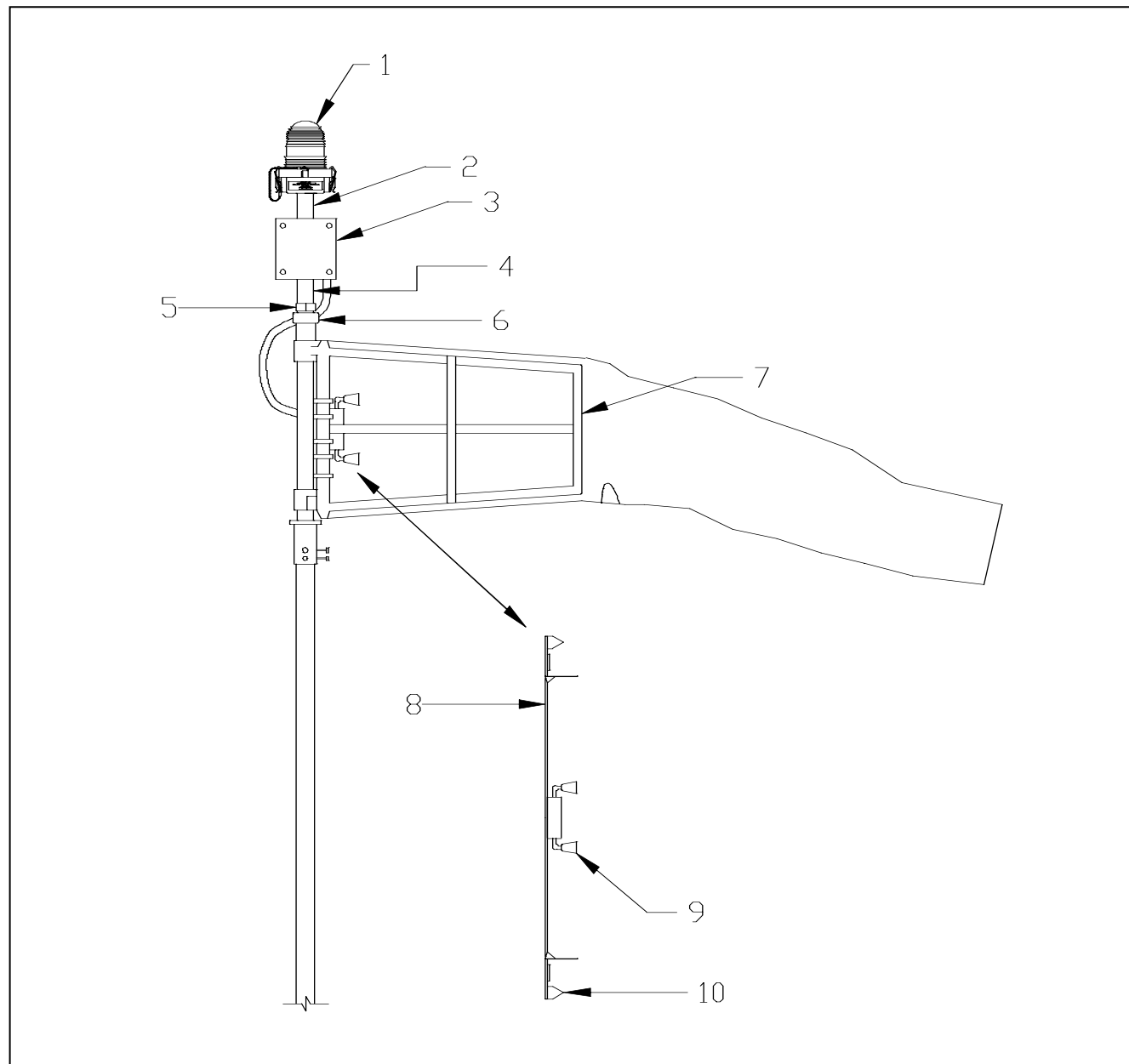


Figure 3-5. Installing Internally Lighted Wind Cone

- | | | |
|----------------------------|------------------------|--------------------|
| 1. L-810 Obstruction Light | 4. Pipe Nipple | 7. Wind Cone Cage |
| 2. Pipe Nipple | 5. Hex Reducer Bushing | 8. Lamp Bar |
| 3. Power Rotating Coupling | 6. Reducer Bushing | 9. Lamp Holder |
| | | 10. Mounting Clamp |

7. Internally Lighted Wind Cone Installation *(contd.)*

2. Install assembled wind cone cage (7) onto shaft assembly without the sock and secure the cage assembly to the shaft with set screws found in the bearings. The top bearing should be below threads on the end of the shaft. Reseal the weather cap to the pipe with a silicone RTV sealant.
3. Install 1-1/4 x 1-inch (31.75 x 25.4-mm) reducer bushing (6) on the end of the shaft. Reseal the weather cap to the pipe with a silicone RTV sealant.
4. Install 3/4 x 2 inch (19 x 51 mm) pipe nipple (2) onto the bottom of the power rotating coupling (3). Install 3/4 x 2 inch (19 x 51 mm) reducer bushing (5) on the other end of the pipe nipple.
5. Pull wires through the wind cone pole so that you can feed a sufficient length of wire through the power rotating coupling assembly and attach to the two leads from the power rotating coupling enclosure.
6. Position the long 3/4-inch- (19-mm-) diameter shaft of the power rotating coupling device with 3/4-inch bushing downward and feed wires through the shaft into the power rotating coupling enclosure. Then insert the 3/4-inch (19-mm) bushing into the 1-1/4 x 1-inch (31.75 x 25.4-mm) reducer bushing (6) and tighten.

NOTE: The upper sealed power rotating box should never need any maintenance after installation. However, if entry is required, reseal the lid with RTV sealant.

7. Loosen the bolts and nuts on the end of the lamp bar (8).
8. Loosen the screws in the lamp holders (9) on the lamp bar. Rotate the lamp holders 90 degrees and tighten.
9. Attach the lamp bar on the throat ring of the wind cone cage by slipping mounting clamps over the throat ring. Rotate the lamp bar so that it is nearly parallel to the shaft of the wind cone. Tighten screws at each mounting clamp.
10. Disassemble the L-810 obstruction light (1) by removing the lens clamp, lens, and lamp socket.
11. Attach wires from the power rotating enclosure to the L-810 terminals. Screw the L-810 base onto the 1 x 3-inch (25 x 76-mm) pipe nipple (4). Then screw into the hub on the top of the power rotating coupling assembly and tighten.

7. Internally Lighted Wind Cone Installation *(contd.)*

12. Install 69 W, 120 Vac lamp into the L-810 socket, and reinstall the lens and lens clamp.

NOTE: Lamps are pre-installed.

13. Install the wind sock. Refer to Step 15 of *L-806 Wind Cone Assembly in Assembly Procedures* in this section.
14. Complete installation of wind cone pole. Refer to steps 16 and 17 of *L-806 Wind Cone Assembly in Assembly Procedures* in this section.

8. Export Wind Cone Installation

For the export wind cone installation only, perform the following requirement:

A fence with a padlock gate shall be installed around the wind cone to prevent unauthorized entry.

9. Optional Roof Mounting

This subsection discusses optional roof mounting.

See Figure 3-6. The contractor needs to verify the structural integrity of the roof where the wind cone base support is to be mounted. Depending upon the composition of the roof and existing structural members, additional reinforcement may be needed to make sure that the wind cone can be securely anchored to the roof.

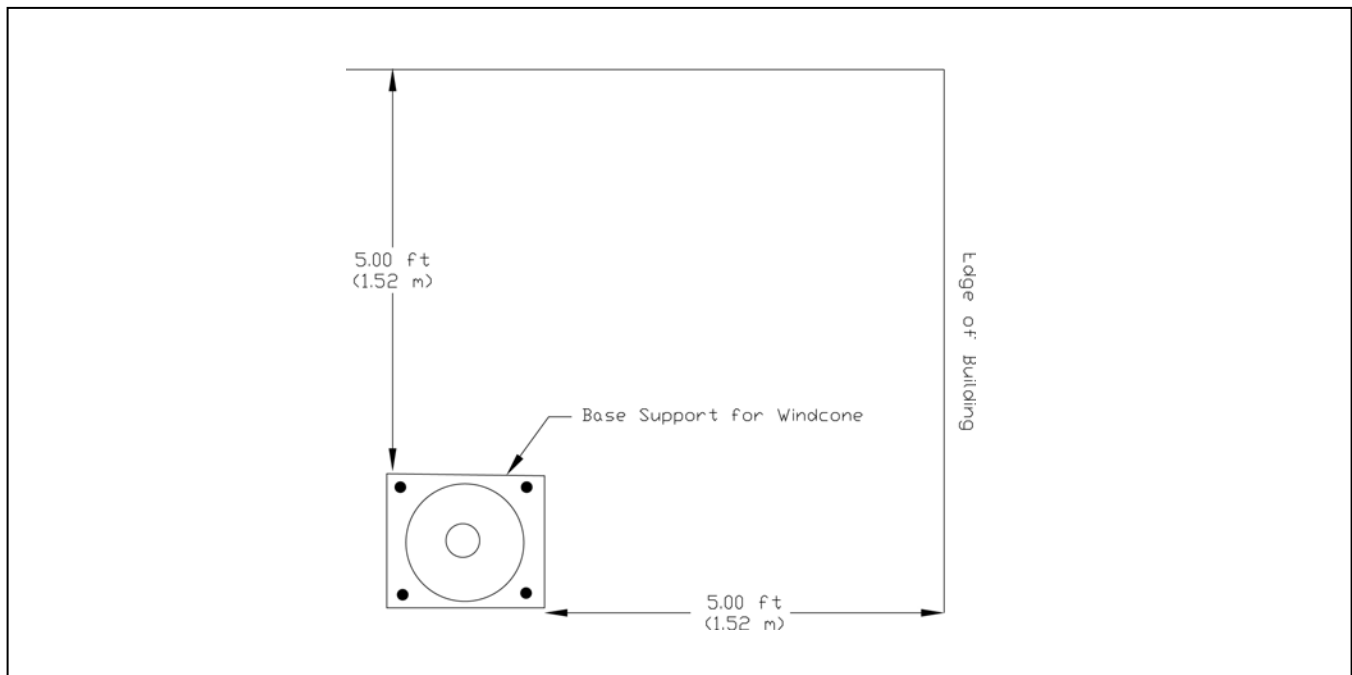


Figure 3-6. Wind Cone Roof Installation

9. Optional Roof Mounting
(contd.)

The base support is designed to use 5/8-inch- (15.87 mm-) diameter bolts. The mounting hardware is supplied by the contractor. See Figure 3-7 and Table 3-1.

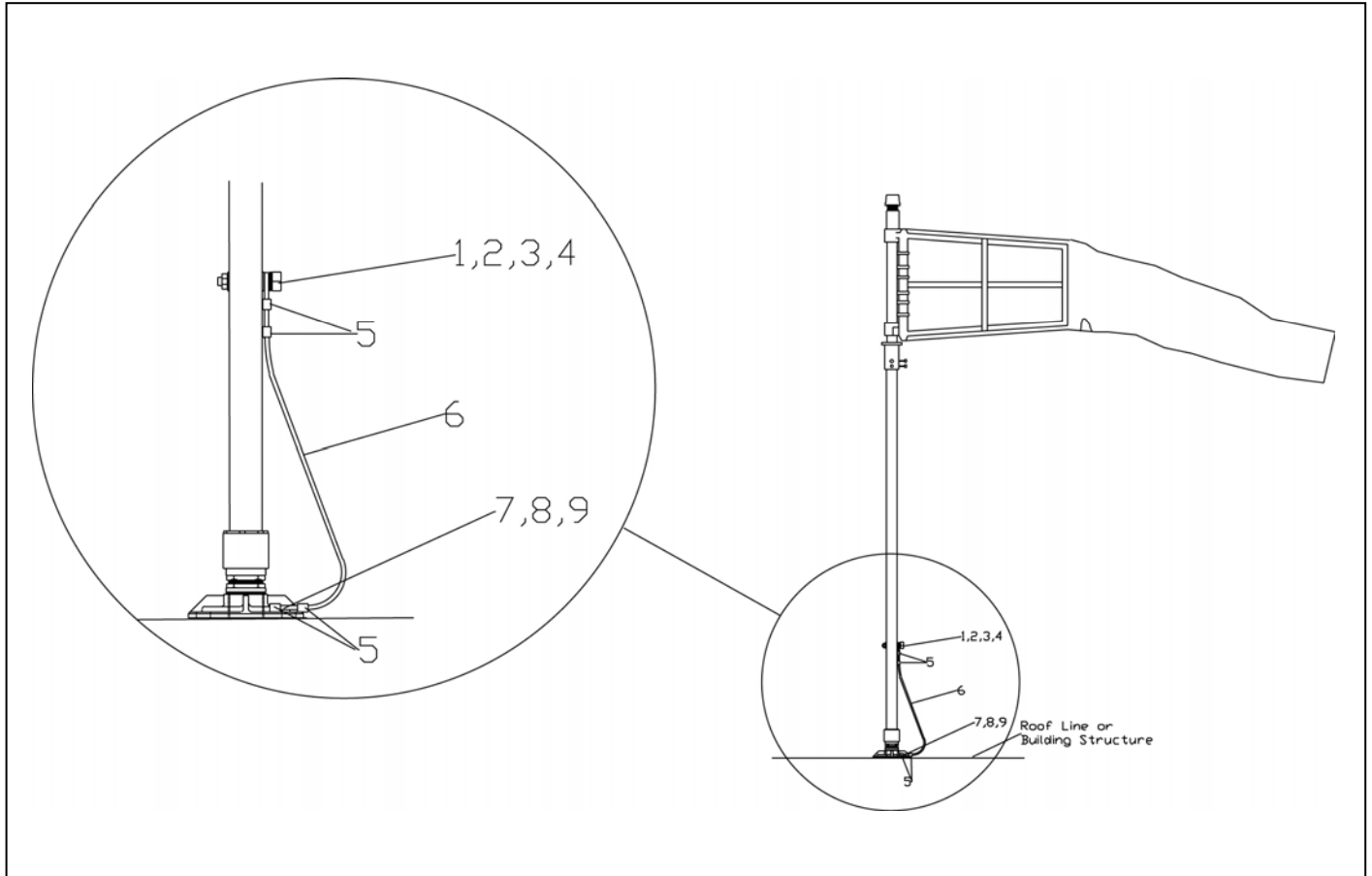


Figure 3-7. Tether Installation

Table 3-1. Parts Required for Tether Installation

Item	Description	Quantity	Note
1	Eyebolt, forged and threaded, 3/8-16 x 3.0 long, galvanized or stainless steel	1	A
2	3/8 flat washer	1	A
3	3/8 lock washer	1	A
4	3/8-16 hex nut	1	A
5	Wire rope clips, forged galvanized or stainless steel for 3/16 wire rope	4	A
6	3/16-in.- (4.76 mm-) diameter tether, using 7 x 7 x 19 stranded stainless steel cable 6 feet (1.83 m) long	1	A
7	5/8 flatwasher	4	A
8	5/8 bolts or studs	4	A
9	5/8 lock washer	4	A

NOTE A: Supplied by contractor.

9. Optional Roof Mounting

(contd.)

When mounting the L-806 wind cone on a roof, a tether must be installed. See Figure 3-7. Refer to Table 3-1 for tether installation parts.

To install a tether (contractor-supplied), perform the following procedure:

1. After the wind cone pole and base have been bolted to the roof, install the eyebolt (1) through the pre-drilled hole in the wind cone pole.
2. Secure the eyebolt with flat washer (2), lock washer (3), and hex nut (4).
3. Loop one end of the tether (6) through the eyebolt and secure the tether loop with two rope clips (5).
4. Install the other end of the tether by first looping the end of the tether to fit a 5/8-in.-diameter bolt (7).
5. Secure the loop with two rope clips (5).
6. Insert one 5/8-in. flat washer (7) and then one 5/8-in lock washer (9) over one of the 5/8-in.-diameter fasteners (bolt or stud) (8) used to anchor the base to the building.



CAUTION: A tether must be used if the wind cone is installed on top of a building or other structure.

Section 4

Maintenance

1. Introduction

To keep L-806 wind cones operating efficiently, follow a preventive maintenance schedule. Follow the guidelines discussed below. Refer to FAA AC 150/5340-26 for more detailed information.

2. Lighted Wind Cones

To maintain lighted wind cones, follow the guidelines below.

- Check input voltage to ensure voltage is 120 Vac \pm 5 volts. Correct voltage, if necessary.
- Replace lamps after 80 percent and before 90 percent of the rated lamp life. Refer to Table 4-1 to estimate percent of the rated lamp life. Clean globes inside and out.

Table 4-1. Rated Lamp Life

Lamp	Lamp Life
69 W/120 Vac obstruction lamp	8,000
QHL, 120 V/100 W sock lamp (internally lighted)	2,000
PAR 38 120 W/120 Vac sock lamp (externally lighted)	3,000

- Clean the L-810 obstruction light globe inside and out when replacing its lamp. If the lamp burns dimly, check for correct voltage and clean globe.

3. Lubrication

To lubricate wind cones, follow the guidelines below.

- Grease both bearings on the cage assembly through the grease fittings on bearings. A rust inhibited, water resistant, lithium-based grease is recommended.

NOTE: In extremely cold climates, wind cone movement may become sluggish. Replace grease with low-temperature lubricant.

- Inspect bearing weather shield. If shield is cracked, deformed, or missing, replace with new weather shield. Weather shield can be made locally using 1/8-in.-thick (3.175 mm), 70 durometer neoprene rubber.

4. Structure

To maintain the wind cone structure, follow the guidelines below.

- Check all metal parts for wear such as corrosion and cracks. Replace metal parts, if necessary.
- Check for flaking paint. Use touch up paint to maintain high visibility and to prevent corrosion.

5. Wind Cone Sock and Cage

To maintain the wind cone sock and cage, follow the guidelines below.

- Check for missing or broken sock ties. Replace sock ties, if necessary.
- Check for looseness of the set screws or bolts listed below. Tighten set screws or bolts, if necessary.
 - ◆ two set screws for each bearing
 - ◆ four hex head screws holding shaft assembly to pole
 - ◆ eight set screws on each sock ring inside sock

6. Wiring

To maintain wiring for the wind cone, check for cracked or frayed power wiring at base plate. Replace power wiring at base plate, if necessary.

7. Lowering Pole Assembly

Before lowering the pole assembly, ensure that the wind cone does not hit the ground.

8. Miscellaneous

- Remove bird and/or insect nests or other debris from the wind cone cage.
- Make sure drain grommets are located in the bottom side of the wind sock and are clear.

Section 5

Parts

1. Introduction

To order parts, call Siemens Airfield Solutions Customer Service or your local representative. Use this five-column parts list, and the accompanying illustration, to describe and locate parts correctly.

2. Using the Illustrated Parts List

This subsection describes how to use the illustrated parts list covered later in this section. It does not provide the actual parts list.

The Item column numbers correspond to the numbers that identify parts in illustrations following each parts list. NS (not shown) indicates that a listed part is not illustrated.

The Description column gives the part name, as well as its dimensions and other characteristics when appropriate. Indentations show the relationships between assemblies, subassemblies, and parts.

The Part Number column gives the Siemens Airfield Solutions part number.

Item	Description	Part Number	Quantity	Note
S1	Assembly	XXXXXXXX	1	A
NS	Part	XXXXXXXX	1	
H1	Part or Assembly			
	Part/Assembly for option 1	XXXXXXXX	2	
	Part/Assembly for option 2	XXXXXXXX	2	
T1	Assembly	XXXXXXXX	1	
	• Part	XXXXXXXX	1	
	• Part	XXXXXXXX	2	
NOTE A				

The Quantity column contains the quantity required per unit, assembly, or subassembly. The code AR (As Required) is used if the part number is a bulk item ordered in quantities or if the quantity per assembly depends on the product version or model.

The Note column contains letters that refer to notes at the end of each parts list. Notes contain special ordering or product/part version information.

3. L-806 Wind Cone Part Numbering System

This section describes how to determine the part number for a particular L-806 wind cone.

Unlighted (Style II) L-806 Wind Cone Part Numbers

Refer to Table 5-1 for the unlighted wind cone part numbers.

Table 5-1. Unlighted Wind Cone Part Numbers

Size	Part Number	Includes L-810 Obstruction Light
Size 1 (8 ft {2.44 m})	44D1222-1	No
Size 1 (8 ft {2.44 m})	44D1222-2	Yes

Externally Lighted (Style I) L-806 Wind Cone Part Numbers

Refer to Table 5-2 for the externally lighted wind cone part number.

Table 5-2. Externally Lighted (Style I) Wind Cone Part Numbers

Size	Part Number	L-810 Obstruction Light
Size 1 (8-ft {2.44-m})	44D1222-4	Yes

Internally Lighted (Style I) L-806 Wind Cone Part Numbers

Refer to Table 5-3 for the internally lighted wind cone part number.

Table 5-3. Internally Lighted (Style I) Wind Cone Part Numbers

Size	Part Number	L-810 Obstruction Light	Note
Size 1 (8-ft {2.44-m})	44D1222-2	Yes	A
NOTE A: Must order Retrofit Kit separately when ordering the internally lighted wind cone. Refer to the <i>Internally Lighted Wind Cone Retrofit Kit Parts List</i> in this section for items supplied in the internally lighted retrofit kit.			

4. Internally Lighted Wind Cone Retrofit Kit Parts List

Refer below for the 8-foot (2.44-m) internally lighted wind cone retrofit kit parts list.

Item	Description	Part Number	Quantity	Note
NS	Retrofit kit, 8-ft (2.44-m) wind cone	94A0065	1	
NS	• Internal power box assembly	44A1925	1	
NS	• Hex reducer bushing, 3/4 x 1 inch	77A0019	1	
NS	• Pipe nipple, 3/4 x 2 inch	77A0131	1	
NS	• Pipe nipple, 1 x 3 inch	77A0069-3	1	
NS	• Lamp, QHL 120 Vac/100 W	3400-0089	2	
NS: Not Shown				

5. L-806 Wind Cone Parts List

This subsection provides the part numbers for the following L-806 wind cone parts:

- common parts
- sock lighting parts
- L-810 obstruction light parts
- cage assembly (8-ft {2.44-m}) parts
- wind cone sock (8-ft {2.44-m}) parts
- power adapter parts

Common Parts

See Figures 5-1 and 5-2. Figure 5-1 shows the L-806 wind cone with internal lighting assembly. Figure 5-2 shows the L-806 wind cone with external lighting assembly.

Item	Description	Part Number	Quantity	Note
10	Pole assembly, 8-ft (2.44-m)	44B1223	1	
11	Anchor bolt kit	94A0152	1	
13	Cage bearing shields (may be purchased locally and made)	63A0332	2	
14	Cage bearings	75B0012	2	
NS	Hex socket set screw, 8-32 x 3/16, large, stainless steel (used on mid and tail ring sleeves)	64A0213-3	16	
NS: Not Shown				

Common Parts (contd.)

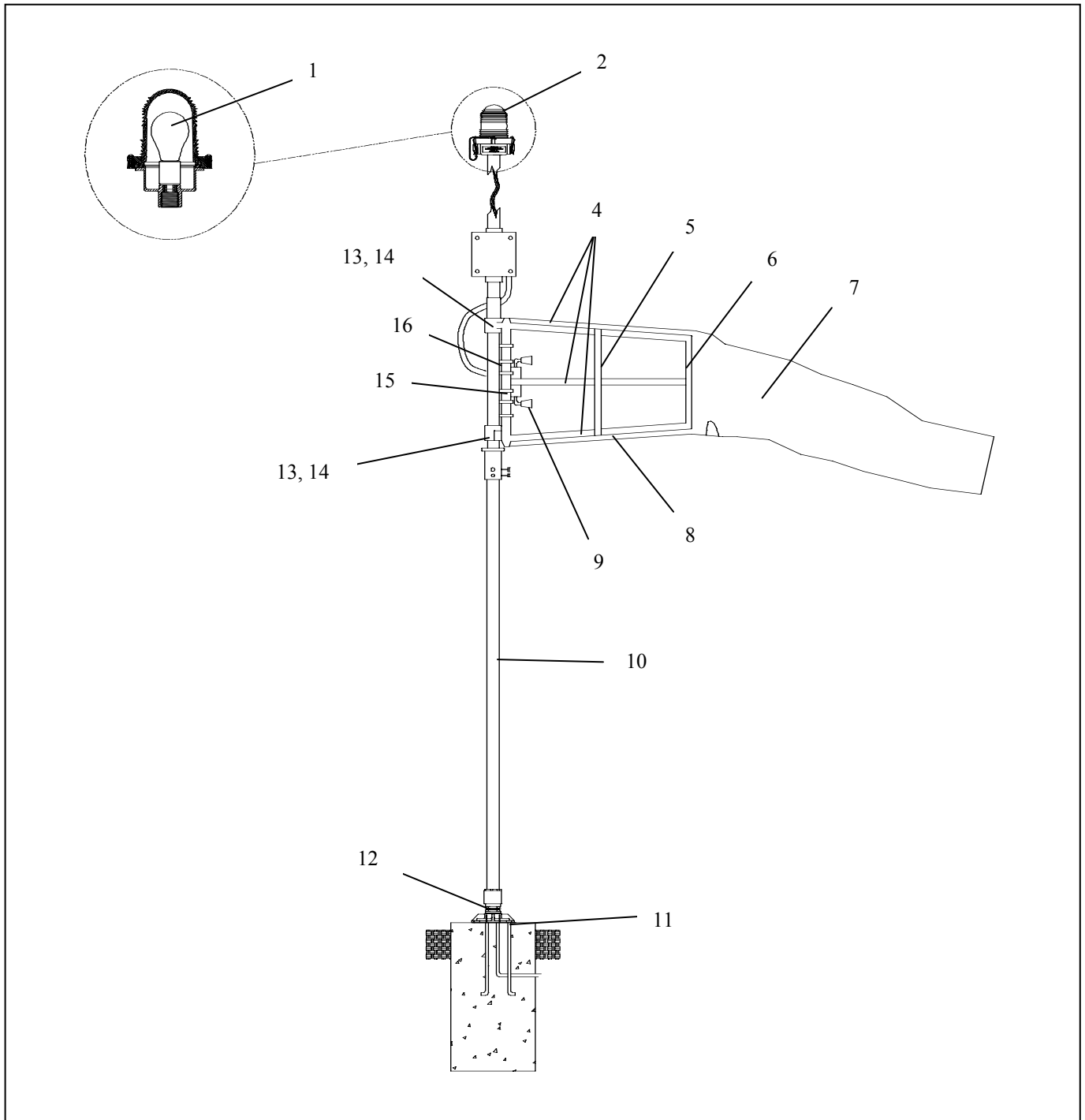


Figure 5-1. L-806 Wind Cone (With Internal Lighting Assembly)

NOTE: Item 3 in Figure 5-1 was left out intentionally to combine part numbers common to internally and externally lighted wind cones.

Common Parts (contd.)

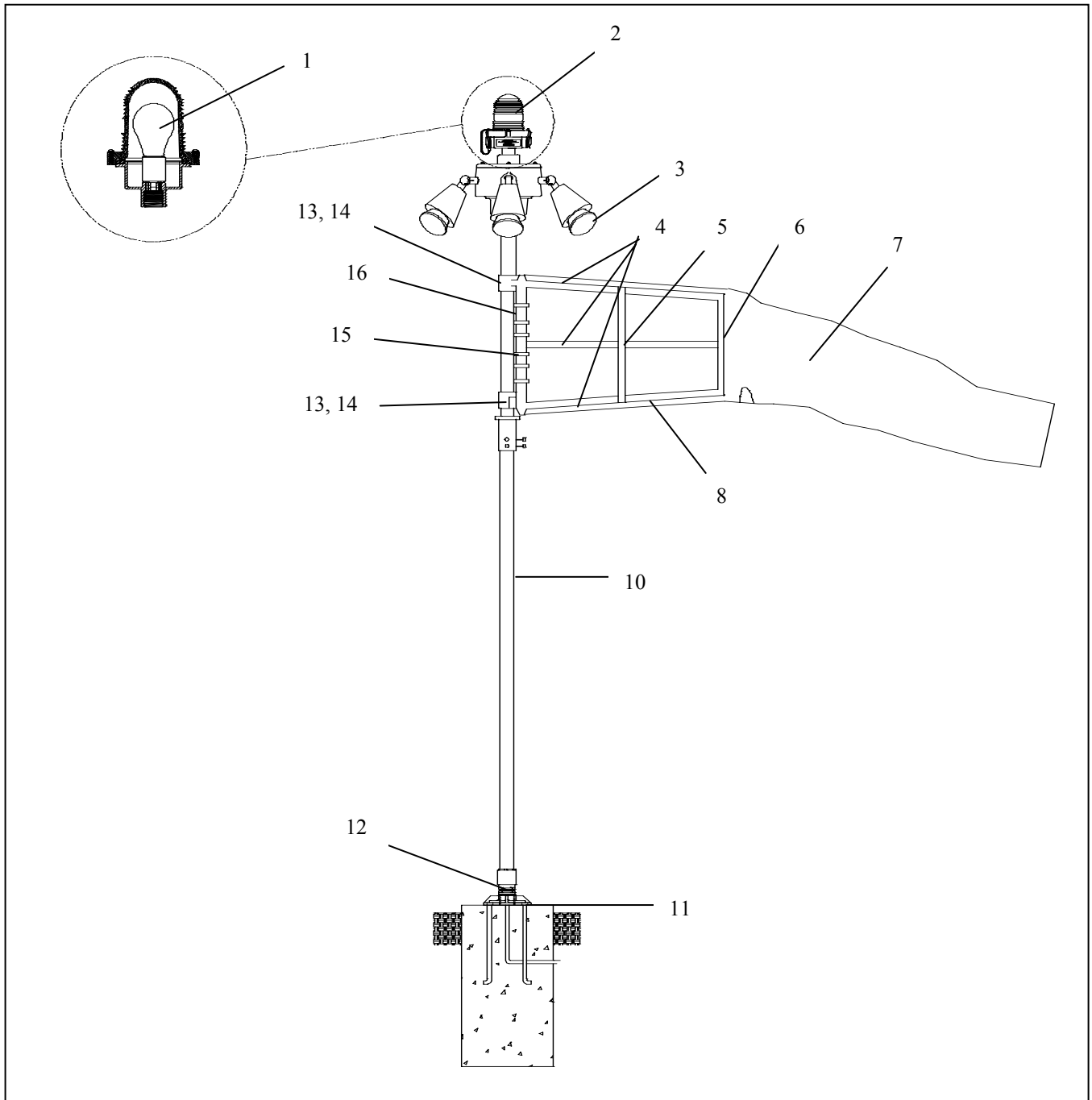


Figure 5-2. L-806 Wind Cone (With External Lighting Assembly)

NOTE: Item 9 in Figure 5-2 was left out intentionally to combine part numbers common to internally and externally lighted wind cones.

**Internally Lighted Wind
Cone Sock Lighting Parts
List**

See Figure 5-1.

Item	Description	Part Number	Quantity	Note
9	Light assembly, 2-lamp	44A5901	1	
NS	Lamp, QHL 120 Vac/100 W	3400-0089	2	
NS: Not Shown				

**Externally Lighted Wind
Cone Sock Lighting Parts
List**

See Figure 5-2.

Item	Description	Part Number	Quantity	Note
3	Lamp, WFL 120 Vac, 120 W	48A0078	4	

**L-810 Obstruction Light
Parts List**

See Figure 5-2.

Item	Description	Part Number	Quantity	Note
1	L-810 obstruction light assembly	44B0936	1	
2	Lamp, 69 W/120 Vac	48A0009	1	

**Cage Assembly
(8-ft {2.44-m}) Parts List**

See Figure 5-1.

Item	Description	Part Number	Quantity	Note
4	Support rod	77B0045-01	4	
5	Ring assembly, mid	44C0934-05	1	
6	Ring assembly, trail	44C0934-06	1	
8	Cage assembly	44D0923	1	
16	Ring assembly, throat	44B0935-02	1	

Wind Cone Sock (8-ft {2.44-m}) Parts List

See Figure 5-1.

Item	Description	Part Number	Note
7	Sock, International Orange	77C0061-1	
15	Sock ties (may be purchased locally)	63A0082	

Power Adapter Parts List

NOTE: The power adapter is used to power the lighted wind cone from a 6.6A series circuit. The power adapter is ordered separately.

Item	Description	Part Number	Note
NS	PA-4 power adapter, 3-step CCR	44D02004-1121	
NS	PA-4 power adapter, 5-step CCR	44D02004-1221	
NS: Not Shown			

6. Recommended Spare Parts

See Figures 5-1 and 5-2.

Item	Description	Part Number	Quantity	Note
1	Lamp, 69 W/120 Vac (for obstruction light)	48A0009	1	
NS	Lamp, QHL 120 Vac/100 W (for internally lighted wind cone)	3400-0089	2	
3	Lamp, WFL 120 Vac, 120 W (for externally lighted wind cone)	48A0078	4	
7	International orange sock, 8 ft	77C0061-1	1	
9	Light assembly (for internally lighted wind cone)	44A5901	1	
12	2-in. frangible coupling	62B0286	1	
13	Cage bearing shields (may be purchased locally and made)	63A0332	2	
14	Bearing	75B0012	2	
NS: Not Shown				

3. Internally Lighted Wind Cone Wiring Connections

See Figure 6-2. Refer to Table 2-7 for lamps and lamp wattage.

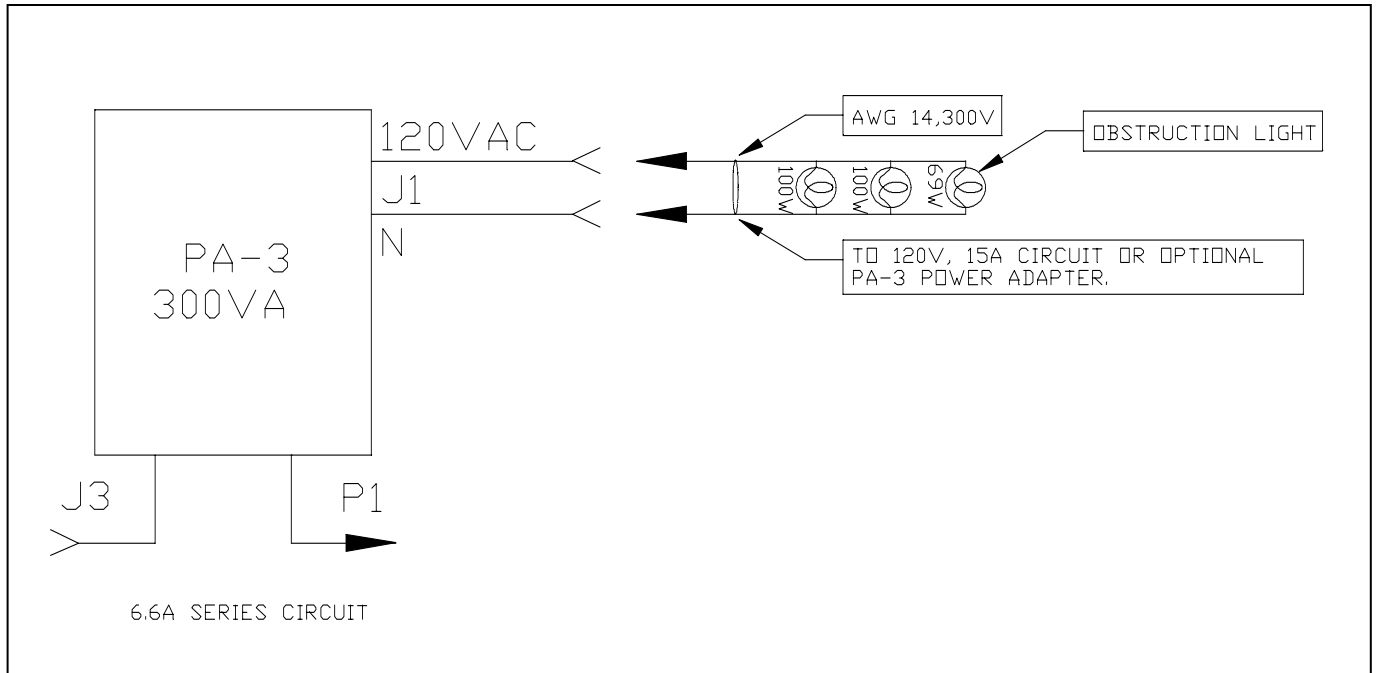


Figure 6-2. PA-3 Connections for Internally Lighted Wind

**4. Typical Wiring Diagram
(Externally Lighted Wind
Cone)**

See Figure 6-3.

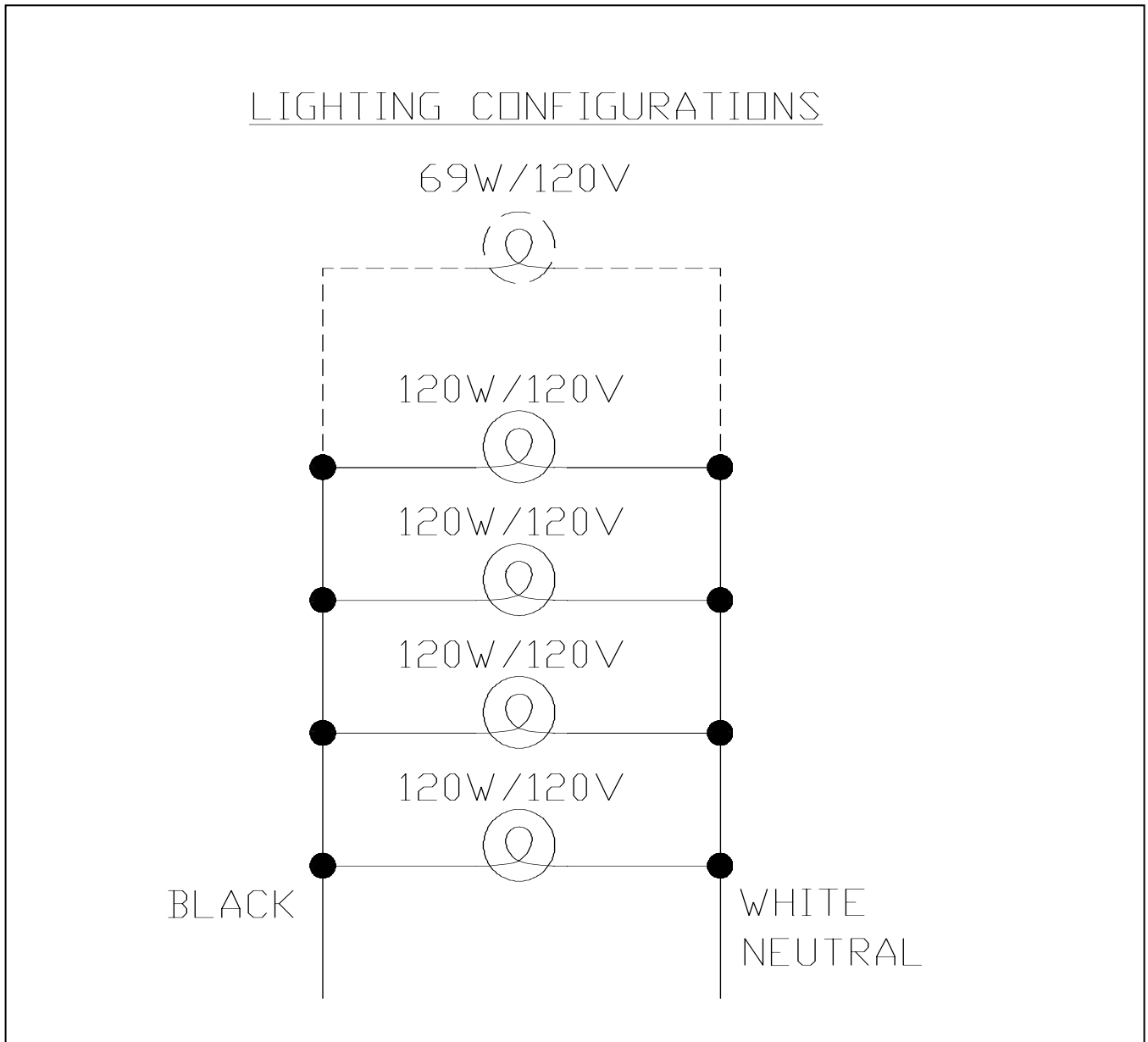


Figure 6-3. Typical Wiring Diagram (Externally Lighted Wind Cone)

